
MARSHALL RANGE OF GRP MODULAR BUILDINGS



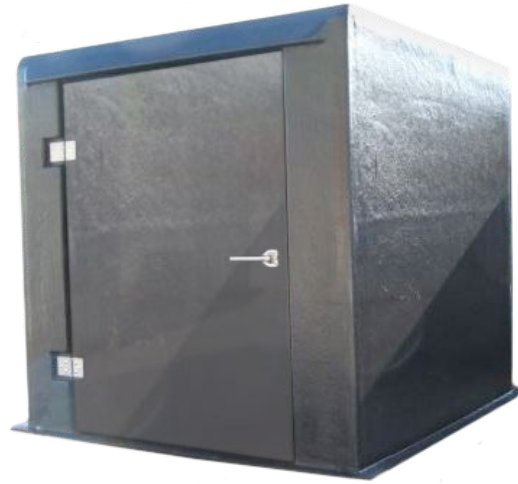
WEATHERPROOF HOUSINGS



MARSHALL RANGE OF GRP MODULAR BUILDINGS

WEATHERPROOF HOUSINGS

Durable, corrosion proof, site assembled buildings suitable for the enclosure of plant and equipment



GRP is an ideal material for the construction of buildings to enclose plant and equipment. It is genuinely corrosion proof, maintenance free and aesthetically attractive. With the flexibility of production, the housing can be offered in almost any colour to enable matching to other adjacent structures, although our house standard of light grey (BS4800 00A05) proves the most popular.

Housings are supplied on pallets and comprise flanged panels and high performance sealants for rapid assembly on site. The base requirement is a simple raised plinth of similar size to the housing, fixing down and weather-sealing are included. Alternatively, for special situations, the housing can be supplied with a floor and galvanised skid steel support to suit site conditions.

The external finish of the housing is a smooth, blemish free eggshell texture. The internal finish is a smooth resin finish (flowcoat). The internal colour is normally identical to the external, however for darker colours a lighter internal colour is recommended.

A comprehensive range of optional standard equipment to complete the housing is available. This includes:

- Personnel doors
- Double doors
- Ventilators with vermin screens
- Thermal insulation
- Equipment mounting plywood pads
- Services penetrations
- Simple electrical fit-out
- Vandal proof plywood reinforcement within the panel laminate

- Corrosion proof
- Virtually maintenance free
- Wide range of colours available
- Thermal insulation available
- Rapidly installed onto simple plinth
- Extensive range of accessories



The modular construction allows a large number of size permutations the most common sizes offered are based around a wall height of 2000mm and a span of up to 3000mm up to almost any length in 500mm increments.

The insulation offered is 25mm thick low density polyurethane foam fully encapsulated within the laminate. This provides an overall U value of less than 0.85W/m²K. Alternative thicknesses are available depending upon the thermal performance required.

Common applications for Marshall buildings include:

- Tank housings
- Booster set enclosures
- Control panel enclosures



Head Office AGM House, London Road, Copford, Colchester CO6 1GT, UK
T: +44 (0)1206 215121 F: +44 (0)1206 215131

Manchester Office Unit 10 Wheel Forge Way, Ashburton Road West, Manchester, M17 1EH, UK
T: +44 (0)161 226 4727 F: +44 (0)161 226 5848

E: info@aquatechpressmain.co.uk www.aquatechpressmain.co.uk

The information in this specification is correct at time of issue; as Aquatech Pressmain design and development programmes are continuous, we reserve the right to make any changes to this specification without prior notice.