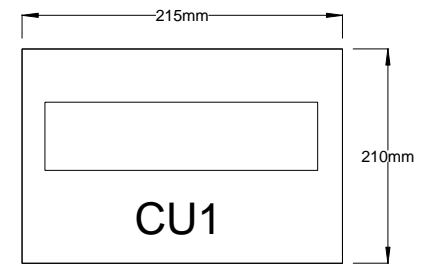


**Typical layout**



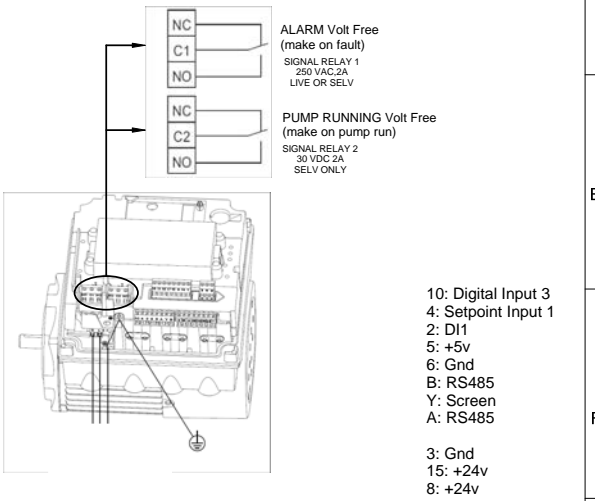
Item	Description	Part No./Type
CU1	Consumer Unit 8 way IP65	SPP-330108
SW1	Main Switch 2 Pole 40 Amp	SHD-520400
CB1-4	Motor Circuit Breaker 16 Amp	SCB-51016D
PT1	Pressure Transducer (see body for range)	RNT-xxxxxx

**Notes:**

Note 1. The screen of screened cable must only be earthed at the motor terminal box end, under saddles provided.

Note 2. Additional low water level switch and pressure transducer can be wired to slave pump as optional extras. Replicate the wiring for PT1 & SW1 on the Master Pump (Pump 1) as shown (when fitted).

Note 3. Volt-Free Relays fitted inside motor terminal box (see below)



- 10: Digital Input 3
- 4: Setpoint Input 1
- 2: DI1
- 5: +5v
- 6: Gnd
- B: RS485
- Y: Screen
- A: RS485
- 3: Gnd
- 15: +24v
- 8: +24v

ISSUE	DESCRIPTION	APPD	DATE

**AquaTech Pressmain**  
 Head Office: AGM House, London road, Copford, Colchester, Essex. CO6 1GT. UK  
 Phone: (0)1206-215121 Fax: -215131  
 Manchester Office: 130 Princess road, Manchester. M16 7BY. UK  
 Phone: (0)161-226-4727 Fax: -226-5848

**TITLE**  
 EMV4 230VAC 1Ph  
 Wiring Diagram  
 For 230vac Inverter Driven Motors

DRAWN	APPROVED	DATE
RB		29/7/14
DRWG No. <b>A11686</b>		