

# AquaTech Pressmain

HEATING & CHILLED SYSTEM PRESSURISATION UNITS



**“SA10-E” SERIES**

**AGM**  
Group Member

Datasheet No:	219
Issue No:	3
Date:	1/6/08



## SA10-E

### Single or Twin Pump Spill Back Pressurisation Unit with 2020+ Microprocessor Controller

#### GENERAL

The "SA10-E" Series of pressurisation units are designed to maintain a minimum set pressure in a heating or chilled water system. Once the system has been initially filled via a quick filling loop, should the pressure fall below the cold fill pressure the unit operates automatically to restore that pressure. If high or low-pressure conditions should occur the boiler/chiller operation can be interrupted via the volt-free contacts provided. The unit uses a suitably sized spill/fill tank to store the expanded water from the system and refill the system during the contraction phase. All packaged equipment is manufactured in accordance with ISO9001 quality assurance procedures.

#### STANDARD SPECIFICATION

AquaTech-Pressmain 'SA10-E' series, heating or chilled water pressurisation unit. Suitable for cold fill pressures up to 3.0 bar/45psi or 7.0 bar/98psi. Controlled by AquaTech-Pressmain 2020Plus micro-processor controller with pressure transducer for long-term reliability and accuracy, non-volatile EPROM memory and data logging function. Fully packaged unit incorporating; single or twin pressurisation pumps, (auto change-over to even wear with twin pump models); Solid state pump drives with thermal overload protection; Automatic periodic pump pulsing to prevent pump seizure; Combined high/low system pressure cut-out relay volt-free contact; RS232 or 422/485 serial communications port; suitably sized spill/fill tank with 15mm float valve having a type 'AB' air gap to Water Supply Regulations 1999; Fascia controls to provide indicating lights for each pump condition or status, run, hand, off, auto; "User friendly" Fascia keypad to enter & set operational parameters, reset alarm & mute; "Plain English" 2 Line LCD illuminated display.

8 BMS Volt free relay connections, Fascia lights for pump tripped condition and optional extra automatic cut-out and reset on tank low water level to prevent pump from dry running.

All controls contained within a powder coated sheet steel dust and damp proof enclosure to IP54, with interlocking door isolator.

Standard Electrical supply: Single Phase, 230 Volt AC, 50Hz, 6 Amp; Max power: 0.74kW

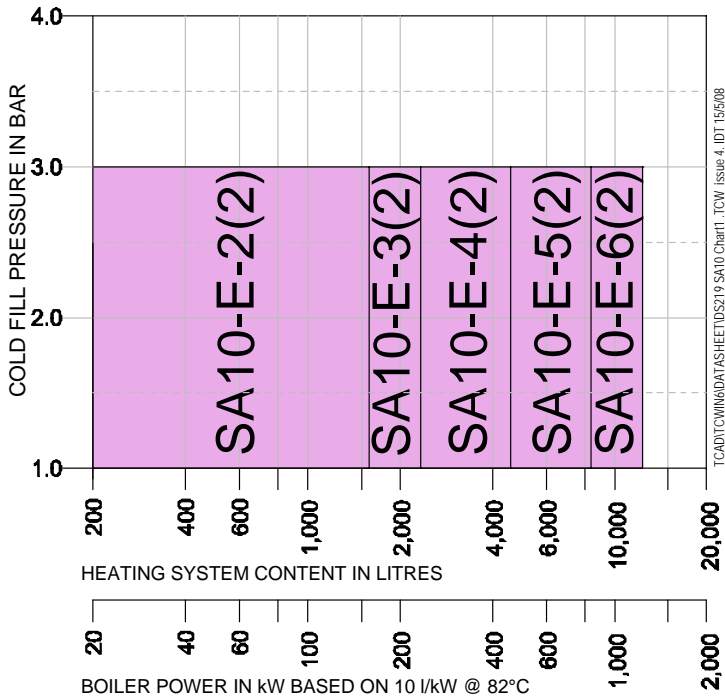
#### STANDARD FEATURES OF SA10-E:

- Boiler ratings up to 1250kW @ 82°C
- Heating System contents up to 12,500 litres
- Chilled System contents up to 75,000 litres
- Temperature range up to 90°C
- Cold fill pressure 1.2 bar to 3.0 bar or 3.0 bar to 7.0 bar (dependent upon pump used)
- Reliable 2020Plus Microprocessor/transducer control
- Boiler / Chiller safety interlock relay
- Audible alarm with mute & reset operates on high & low pressure
- Control vessels - tested to BS6144 - max working pressure 10 bar
- Twin pump models with duty/standby pumps & automatic alternation of duty pump to even wear
- All models are fully compatible with Building Management Systems
- Fluid category 5 (water supply regulations 1999)
- Built to latest CE requirements and in accordance with ISO9001

#### OPTIONAL FEATURES:

- Optional Low water level pump protection switch mounted in spill/fill tank.
- Optional High water level alarm switch mounted in spill/fill tank.

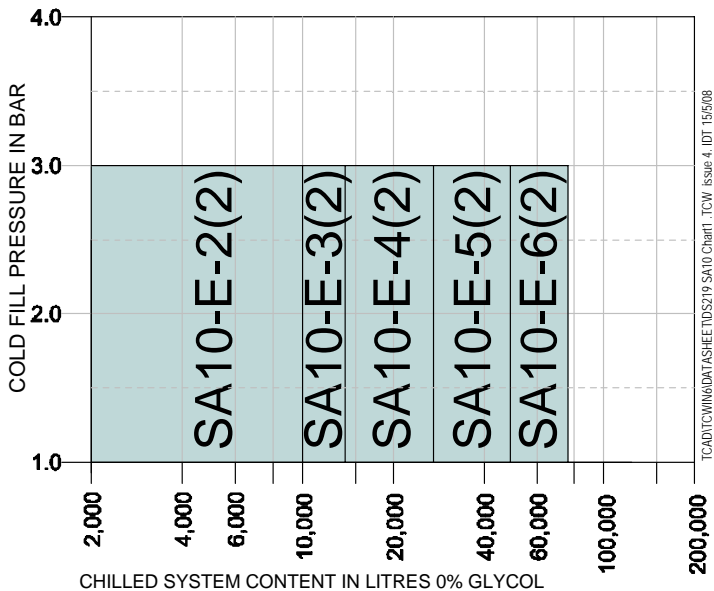
## SELECTION CHART FOR HEATING SYSTEM:



Assuming a system content of 10 litres per kilowatt of boiler power, use the above chart to select the appropriate pressurisation unit for your system.

e.g. for a total boiler power of 400kW (assuming 10l/kW would approximate to a system content of 4000 litres) select pressurisation unit model "SA10-E-4" for single pump or "SA10-E-42" for twin pump unit.

## SELECTION CHART FOR CHILLED SYSTEM:



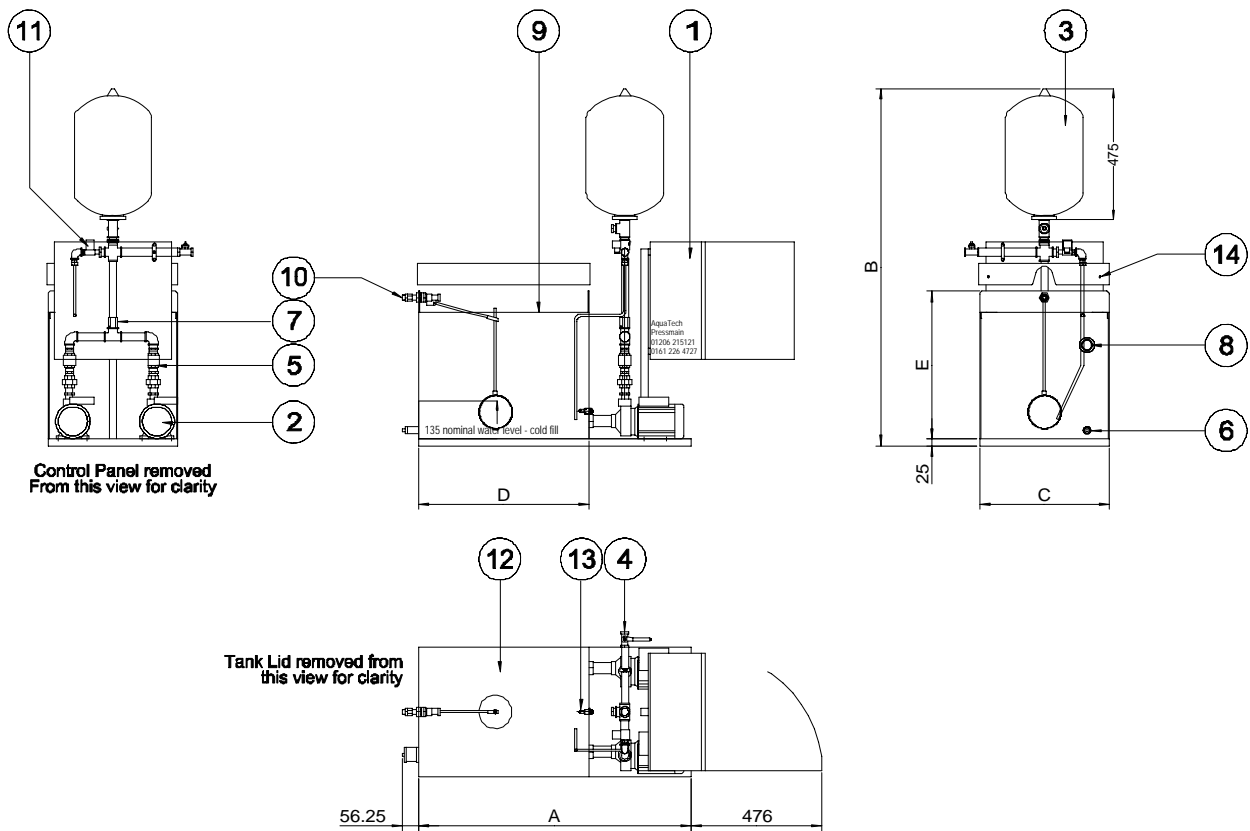
Assuming there is no Glycol in the system; use the above chart to select the appropriate pressurisation unit for your system.

e.g. for a total system content of 40,000 litres select pressurisation unit model "SA10-E-5" for single pump or "SA10-E-52" for twin pump unit.

For systems that contain Glycol please contact AquaTech-Pressmain for advice on selecting the correct unit.

## GENERAL ARRANGEMENT DRAWING:

The standard arrangement for SA10-E pressurisation units is shown although special units can be manufactured to suit site conditions/requirements. Please contact your local AquaTech-Pressmain office for details.



Parts List for standard SA10-E	
1	Control Panel (2020+)
2	Pump 230/1/50
3	Control Vessel 24 litre
4	System Connection 3/4"
5	Non-return Valve
6	Drain 1/2"
7	Control Valve
8	Overflow Warning 1 1/4"
9	Flow Over Weir
10	Float Valve 1/2" Part 1.
11	Solenoid Spill Valve
12	Spill/Fill tank
13	Optional Low Water
14	Screws for Lid

### Dimensions for Standard Units:

Model reference	A	B	C	D	E	Weight Dry kg	Spill Vol l
SA10-E-2 SA10-E-22	830	1320	470	460	535	70	50
SA10-E-3 SA10-E-32	990	1320	470	620	535	80	70
SA10-E-4 SA10-E-42	990	1320	620	620	695	100	140
SA10-E-5 SA10-E-52	990	1620	620	620	990	120	250
SA10-E-6 SA10-E-62	1290	1620	620	920	990	140	380

Note: Special units can be manufactured to suit site conditions.

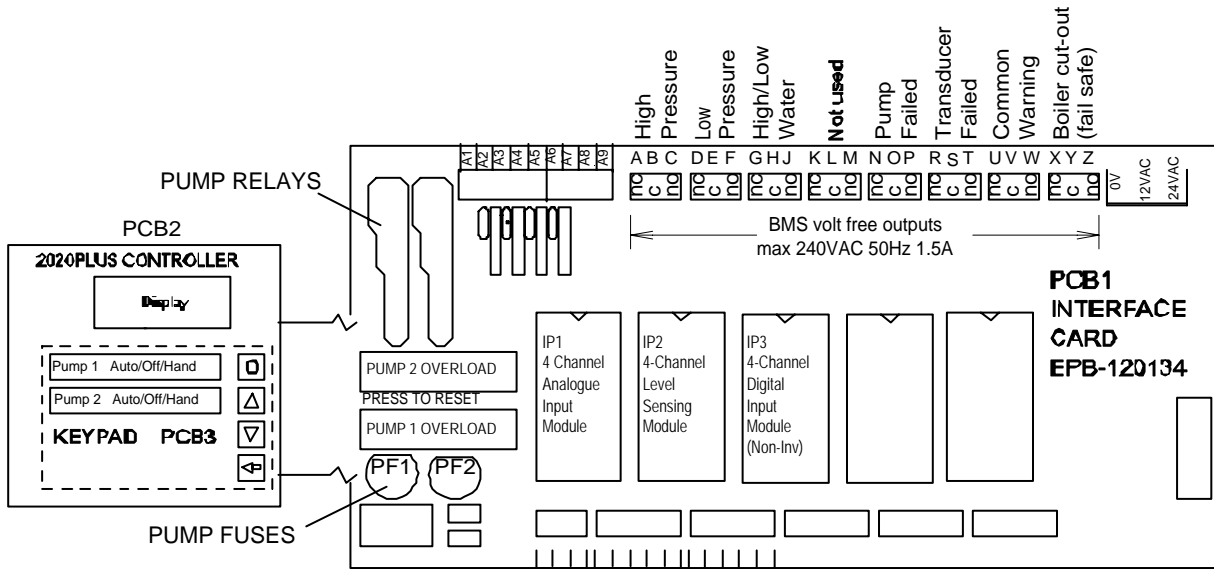
"SA10" denotes spill type pressurisation unit

"-E-" denotes Electronic version with 2020+ Micro-processor control panel

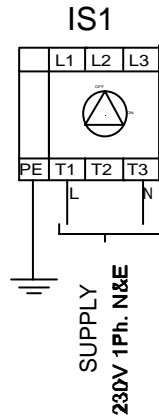
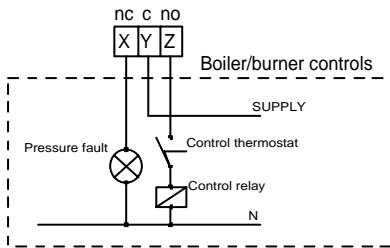
"-2,3,4,5,6" denotes spill/fill tank size

"2" as 7<sup>th</sup> character denotes twin pump unit, otherwise single pump.

## ELECTRICAL CONNECTIONS:



Typical Boiler Interrupt Circuit  
(Wiring by controls contractor)

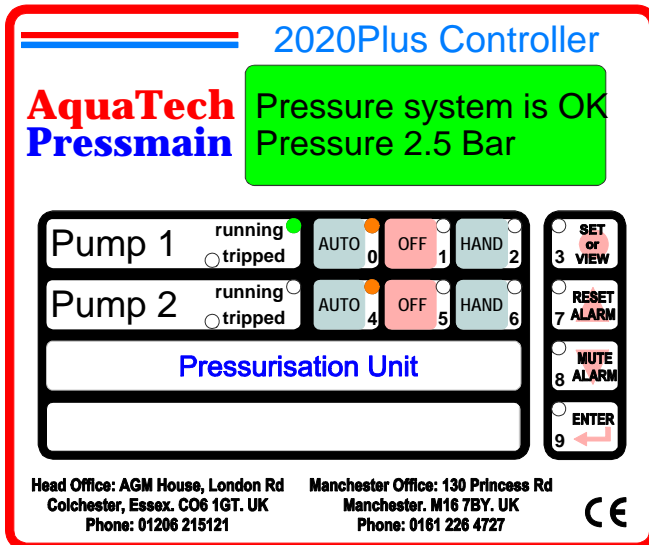


Standard Electrical supply: Single Phase, 230 Volt AC, 50Hz, 6 Amp; Max power: 0.74kW

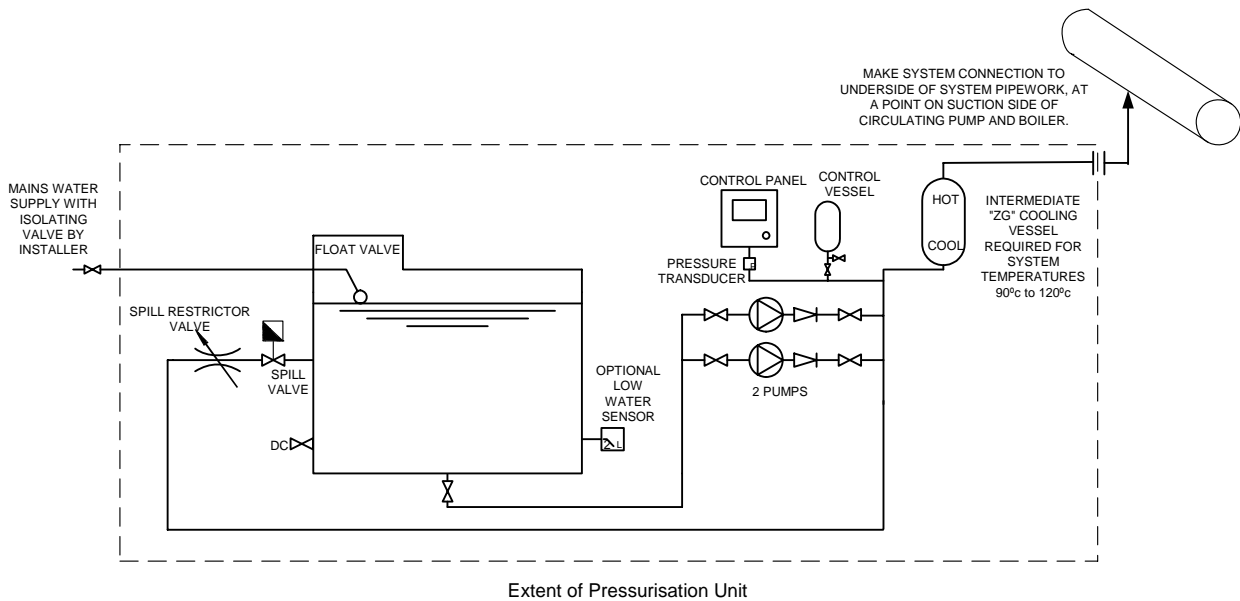
Larger single phase motors may be required for higher pressure versions with cold fill pressure greater than 3.0Bar. 400/3/50 3 phase motors available for special applications.

## CONTROL PANEL FASCIA:

Typical control panel fascia layout is shown below, using the AquaTech-Pressmain 2020+ Micro-controller.



## TYPICAL SCHEMATIC PIPEWORK ARRANGEMENT:



## WORK REQUIRED ON SITE:

1. Position pressurisation unit on raised plinth
2. Attach control vessel where supplied loose
3. Connect ½" Mains water supply to float valve, minimum pressure of 1 Bar required.
4. Connect overflow warning pipe to drain.
5. Connect to system pipework on underside of return pipe as shown above.
6. Connect Mains electricity supply, boiler/chiller interlock wiring and BMS volt frees as required.
7. Contact AquaTech-Pressmain to have unit commissioned when ready.

### CONSTRUCTION STANDARDS FOR SA10-E PRESSURISATION UNITS

ITEM	MODEL/SERIES	STANDARD/CLASS	REMARKS
Quality System	Manufacturing	ISO 9001:1994	Cert No. FM33090
Electrical Safety Standard		BS EN 60204-1:2006	EC Declaration of Conformity
Low Voltage Directive		73/23/EEC & 93/68/EEC	EC Declaration of Conformity
EMC Directive 89/336/EEC		EN61000-6-3 & EN61000-6-1	EC Declaration of Conformity
Spill/Fill tank	SA10 Galvanised	Water Supply Regs 1999	Fluid Category 5
Mains water float valve	Drop Arm	BS1212 Part 1	½" BSP
Pipework		BMS	Painted
Pumps	3or 6 Bar max pressure	ISO2548 Class C annex B	230/1/50 0.37kW
Pump motors		TEFC IP44, Class F Insulation	Thermal overload protected
Control cabinet	2020+	IP54	425x425x200mm
Isolator Door Interlocked	GHA-030250	CE, UL, CSA, BS, IEC, VDE	
Microprocessor Controller	2020+	89/336/EEC compliant	
Pressure Transducer	392 – 10Bar	SS/Ceramic/Wras	
Control Vessel	24 litre – 10Bar	BS6144	CE marked

**AquaTech**  
**Pressmain**

Head office  
AGM House, London Road, Copford, Colchester. CO6 1GT  
T: 01206 215121 F: 01206 215131

Manchester Office  
Dolphin House, 130 Princess Road, Manchester. M16 7BY  
T: 0161 226 4727 F: 0161 226 5848

E: [info@aquatechpressmain.co.uk](mailto:info@aquatechpressmain.co.uk)  
W: [www.aquatechpressmain.co.uk](http://www.aquatechpressmain.co.uk)

Leaders in the design, manufacture and assembly of fluid pumping equipment and control systems.  
Applications: Cold Water Supply; Fire Fighting; Heating & Chilled System Pressurisation; Tank Monitoring.